

# Capturing and analyzing valuable supply chain information

for data-driven decision making

**PFSCM** has implemented a next-generation supply chain management **Control Tower** for the end-to-end tracking of products and information through the whole supply chain.

## Our Control Tower provides:

- ▶ **End-to-end tracking** of products and shipments from point of origin to destination.
- ▶ **Tailored, accurate, real-time data** for evidence-based decision making.
- ▶ **Secure, uninterrupted cloud sharing** of authorized information among stakeholders on one digital platform.
- ▶ **Easy electronic record keeping** through secure, tamper-proof platforms and technologies for improved chain of custody and audit trails.
- ▶ **Access to a platform** that serves as the foundation for serialization, authentication, and blockchain and is used to identify counterfeit goods and ensure product integrity.

## By bringing innovative technologies to the public health supply chain, we:



**Connect public health supply chain stakeholders** to real-time information for better decision making, accountability, and visibility across the board.



**Collect and analyze** in-country data for better procurement planning to reduce stockouts and wastage.



**Collaborate with stakeholders** on one platform to streamline communications, reduce email traffic, and ensure no tasks and actions are overlooked.



**Provide real-time notifications** and alerts about any possible delays in the supply, ensuring immediate actions for proactive risk management.

PFSCM's Control Tower is powered by One Network.  One Network Enterprises™



PFSCM's Quality Management System has been certified to ISO 9001:2015 Quality Management System Standard by UL DQS Inc. Ref Registration # 10012936 QM15



Inspiring supply chain innovation for international development

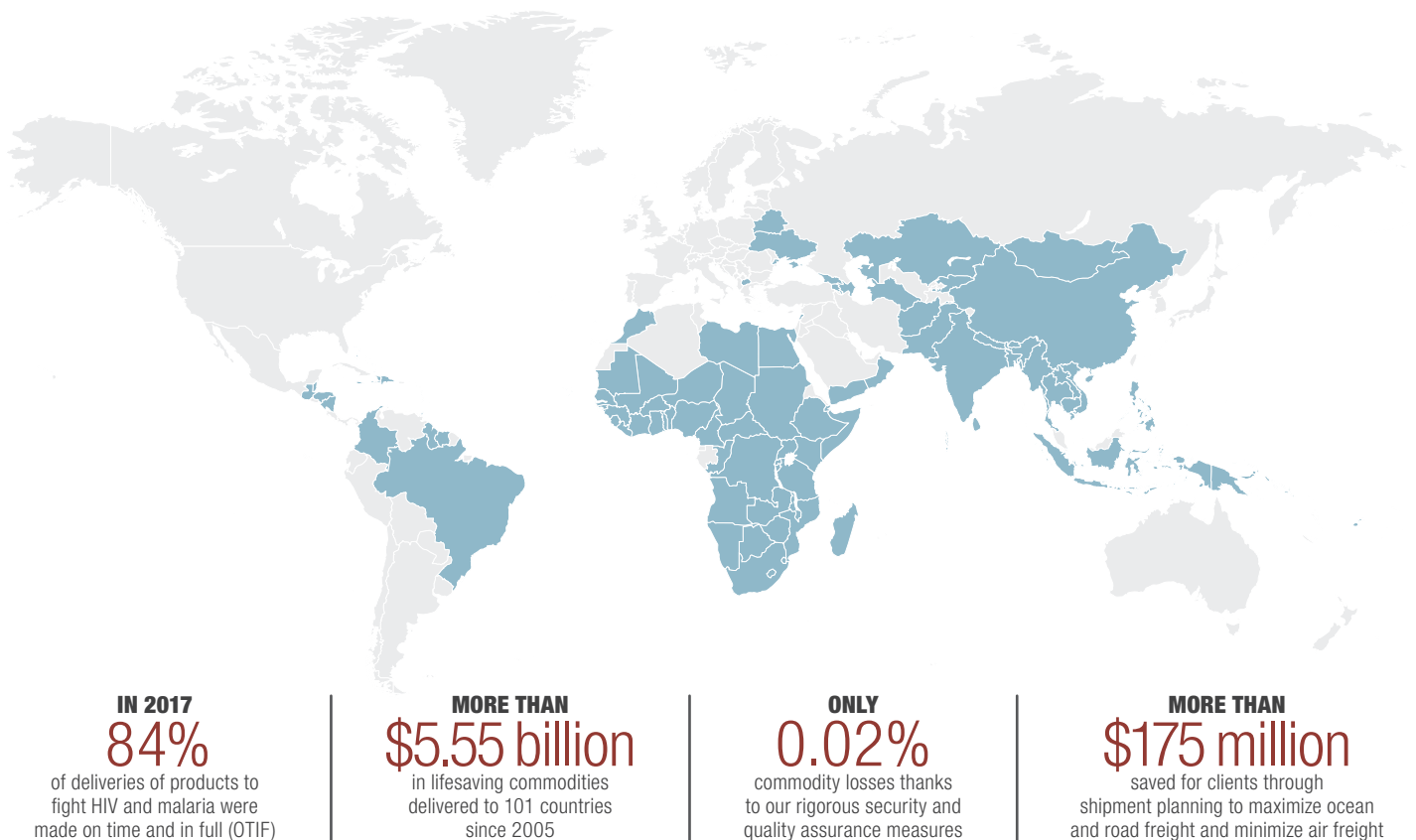
## Our Mission

**PFSCM strengthens, develops, and manages secure, reliable, cost-effective, and sustainable global supply chains to improve the lives of people in low- and middle-income countries.**

## Our Partnerships

PFSCM partners with donors, governments, NGOs, and pharmaceutical companies to develop and manage supply chains. Our partners and clients include the Global Fund to Fight AIDS, Tuberculosis and Malaria; the US Agency for International Development; Save the Children Myanmar; the governments of the Dominican Republic and Malawi; Gilead; Janssen; and the Elizabeth Glaser Pediatric AIDS Foundation. PFSCM is also a member of the Partnership for Quality Medical Donations (PQMD).

## Our Impact



### About Us

Founded in 2005, PFSCM is a nonprofit organization that strengthens public health supply chains, ensuring lifesaving commodities are accessible and available to communities in hard-to-reach places. JSI Research & Training Institute, Inc. is the parent company of PFSCM.



2733 Crystal Drive, 4th Floor  
Arlington, VA 22202 USA  
+1-571-227-8600



[www.pfscm.org](http://www.pfscm.org)  
[pfscm@pfscm.org](mailto:pfscm@pfscm.org)



Follow us on social media

De Bleek 9  
Woerden 3447 GV, The Netherlands  
+31 850 167 000